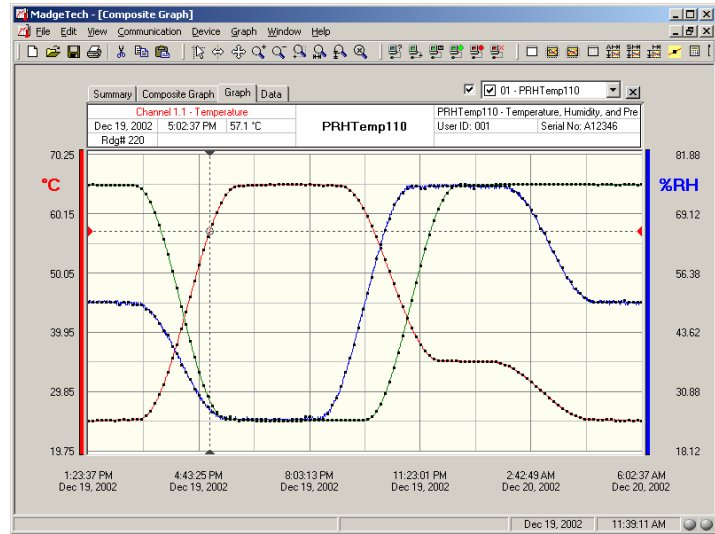
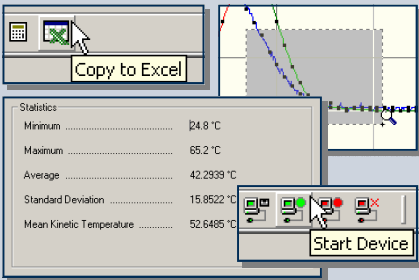


### FEATURES

- ❖ Real time alarm notification
- ❖ Multiple data set graphing
- ❖ Real-time recording
- ❖ Data exporting
- ❖ Statistics calculations
- ❖ Graphical cursor
- ❖ Digital calibration
- ❖ Automatic time synchronization
- ❖ Data annotation



MadgeTech's data recorder software is an easy-to-use, Windows-based software package allowing the user to collect, display and analyze data effortlessly. A variety of powerful tools allow the user to examine, export and print professional looking reports with just the click of a mouse.

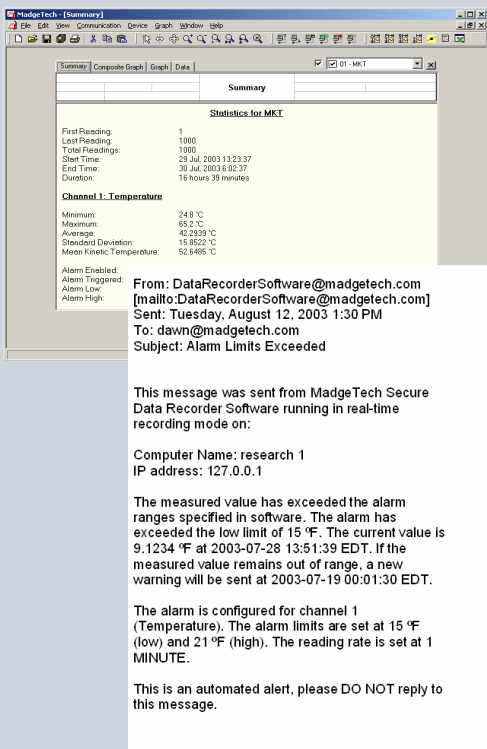
Our cutting-edge software is designed for the continuous monitoring and alarming of all MadgeTech data loggers. The software can collect and display real-time data from any logger directly connected to the user's PC, a local area network, or even remotely through the use of MadgeTech's radio frequency transceivers.

### REAL-TIME ALARM NOTIFICATION

MadgeTech software offers a real-time alarm notification function which lets the user monitor user-defined alarm limits. MadgeTech's software is ideal for applications when notification of out-of-range conditions is required. Alarm messages can be sent in real-time right to your desktop or sent remotely via email or pager. It offers a straight-forward, user-friendly tool to provide a complete monitoring and reporting system for all of your needs.

Let MadgeTech's software make quality control easy for you. The logical evolution from the existing strip chart recorders, MadgeTech's software allows you to efficiently monitor critical systems continuously without having to leave your desk.

Demo our software at [www.madgetech.com](http://www.madgetech.com)



## SOFTWARE FEATURES

- Alarm Notification:** MadgeTech software offers a real-time alarm notification function which lets the user monitor user-defined alarm limits. Alarm messages can be sent in real time to you're your desktop or sent remotely via email or pager.
- Overlay Multiple Graphs:** Simultaneously analyze data from several units or deployments; easily switch to a single data series.
- Automatic Time Synchronization:** Automatically aligns and synchronizes data from multiple loggers on a single graph.
- Export to Excel®:** Excel button on toolbar allows simple one click data export to Microsoft Excel. One click of the Excel Icon will automatically open Excel and format the data into a spread sheet. This command will automatically synchronize, in time, data from multiple data loggers and store the data in an Excel spreadsheet.
- Export Data:** Data may be exported in the following formats:  
\*.dat - This is our own internal ASCII data format which can be viewed by most text editing or word processing software.  
\*.txt - Files stored in this format contain tab delimited text and can be viewed by most word processing and spreadsheet programs.  
\*.csv - Files stored in this format contain comma separated values and are directly readable by Microsoft Excel and many other spreadsheet programs.
- Real-Time Recording:** Collect and display data in real-time while continuing to log.
- Statistics:** Automatically calculates averages, minimum, maximum, standard deviation, and mean kinetic temperature.
- Summary:** View statistics and alarm information in a simplified report format.
- Data Table:** Instantly access tabular view for detailed dates, times, values, and annotations
- Zoom:** Magnify data of interest with powerful zoom and drag tools. Supports multiple zoom in and zoom out. Features extended zoom capabilities; box zoom, vertical zoom, and horizontal zoom as well as point and click.
- Formatting Options:** Change colors, line styles, plotting options, show or hide channels in an instant.
- Scaling Options:** Autoscale function fits data to the screen or allows user to manually enter their own values
- Engineering Units:** Define the type of units to be displayed on the graph using the Engineering Units Wizard. User defined engineering units may be applied to voltage, current, pulse, event and state loggers.
- Menu Accessibility:** Right click on the graph for easy access to all formatting, measurement units and graphing tools menu options.
- Annotation:** Easily annotate specific data points on the graph with a click of the mouse.
- Graphical Cursor:** One click displays readings by time, value, parameter or sample number
- Printing:** Automatically print graphical or tabular data.
- Communications:** Automatically sets up communications port or lets user set configuration.
- Logger Configuration:** Easy set up and launch of data loggers with immediate or delayed start, preferred sample rate, and device ID.
- Calibration:** Fully digital calibration function automatically stores parameters in device. A calibration wizard is provided in the software to simplify the calibration procedure.
- Uninterrupted Data Retrieval:** Data may be downloaded from the logger without interrupting the operation of the unit as it continues to log data.

\*\*\*As part of our commitment to continuous product improvement, MadgeTech reserves the right to change product specifications without notice

### ORDERING INFORMATION

MadgeTech Data Logger Software may be downloaded for **FREE** from [www.madgetech.com](http://www.madgetech.com) at the users convenience. Users will also receive a copy when ordering any of the following:

Model	Description
IFC102	Software, manual and interface cable for micro series
IFC110	Software, manual and interface cable for standard series
USB101	Software, manual, interface cable for standard series, and USB to RS232 converter
NET101	Software, manual, interface cable for standard series, and serial to ethernet converter
RFEXT-KIT	Software, wireless data logging transceiver package
RFEXT	Software, wireless data logging expansion module

### ASK ABOUT OUR DATA RECORDERS

<b>Temperature</b>	<b>pH</b>
<b>Humidity</b>	<b>Level</b>
<b>Pressure</b>	<b>Shock/Vibration</b>
<b>Bridge/Strain</b>	<b>Submersible</b>
<b>Current</b>	<b>Intrinsically Safe</b>
<b>Pulse/Event</b>	<b>RF Transmitters</b>
<b>Voltage</b>	<b>Multi-parameter</b>



201 Route 103 West - PO Box 50 · Warner, NH 03278  
Phone: (603) 456-2011 · Fax: (603) 456-2012  
[info@madgetech.com](mailto:info@madgetech.com) · [www.madgetech.com](http://www.madgetech.com)